

Hydraulic pump

HY85A/B



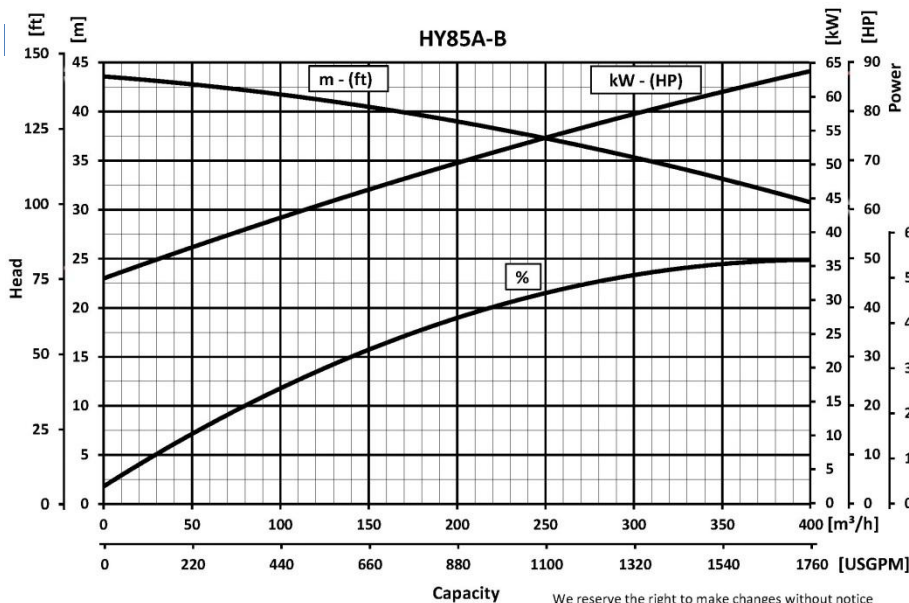
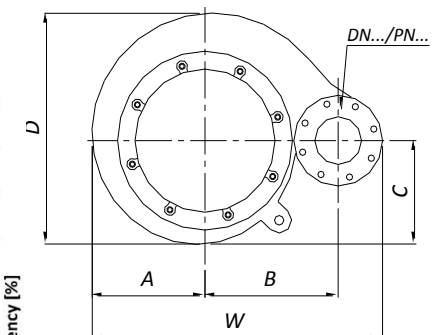
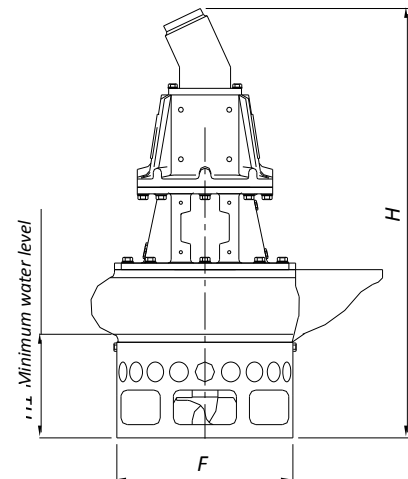
PUMP SPECIFICATIONS	Mod. A	Mod. B
Capacity [m ³ /h - (USGPM)]	240 - (1056)	360 - (1585)
Head [m - (ft)]	37 - (122)	33 - (109)
Impeller diameter [mm - (in)]/type	440 - (17.6)/3 blades closed	
Flanged bore size [DN.../PN... - (in)]	150 - (6)	200 - (8)
Cross section diameter [mm - (in)]	60 - (2.4)	
Weight [kg - (lbs)]	700 - (1540)	730 - (1606)

HYDRAULIC MOTOR	
Motor displacement [cc - (cu in)]	108 - (6.5)
Max. oil flow rate[l/min - (USGPM)]	130 - (34)
Max. pressure [bar - (psi)]	300 - (4350)
Power [kW-HP]	65-90
Speed [RPM]	1180

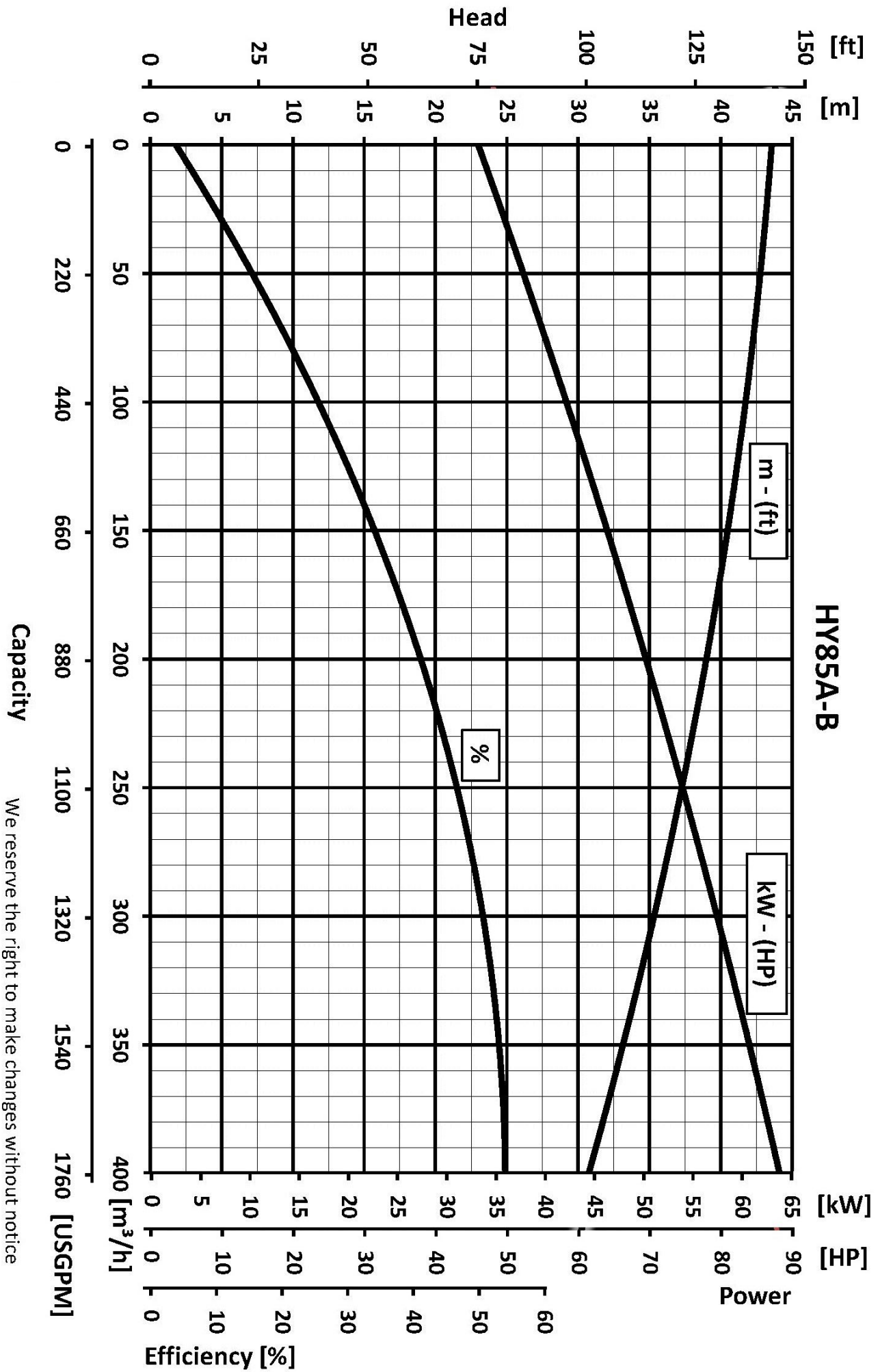
MATERIALS	
Casing	Spheroidal cast iron EN-GJS-500-7 (EN 1563)
Motor housing	Cast iron EN-GJL-250 (EN 1561)
Wear parts	High chrome EN-GJN-HV600 (XCr18) (EN 12513)
Main shaft	High tensile steel 39NiCrMo3 (AISI 9840)

SEALS / LUBRICANT	
Motor side seals	2 lip seals (BUNA)
Impeller side seals	5 lip seals (3 BUNA + 2 PTFE) + 1 V-RING (TPU)
Oil type	ISO 320

DIMENSIONS [mm - (in)]							
H	W	D	F	H1	A	B	C
1390	933	747	548	290	362	428	334
(55.6)	(37.3)	(29.9)	(21.9)	(11.6)	(14.5)	(17.1)	(13.4)



We reserve the right to make changes without notice



Capacity

We reserve the right to make changes without notice